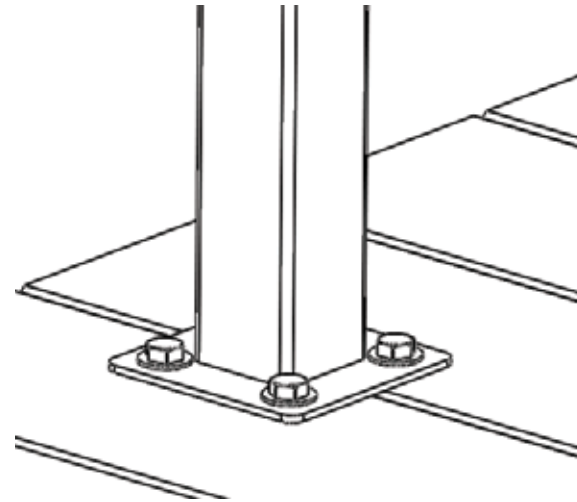


FORTRESS RAILING PANEL SYSTEM SIMPLIFIED

Fe²⁶ | IRON RAILING

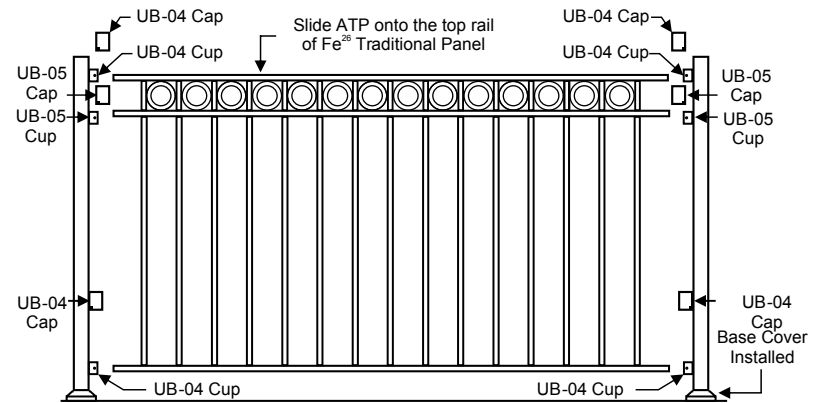
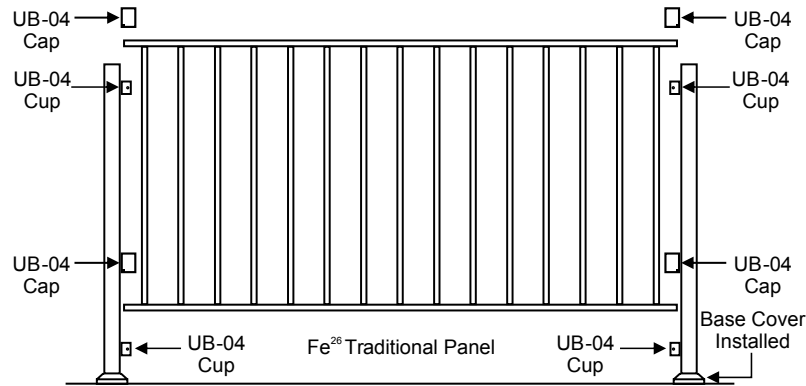
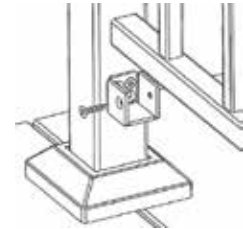
MOUNT POSTS



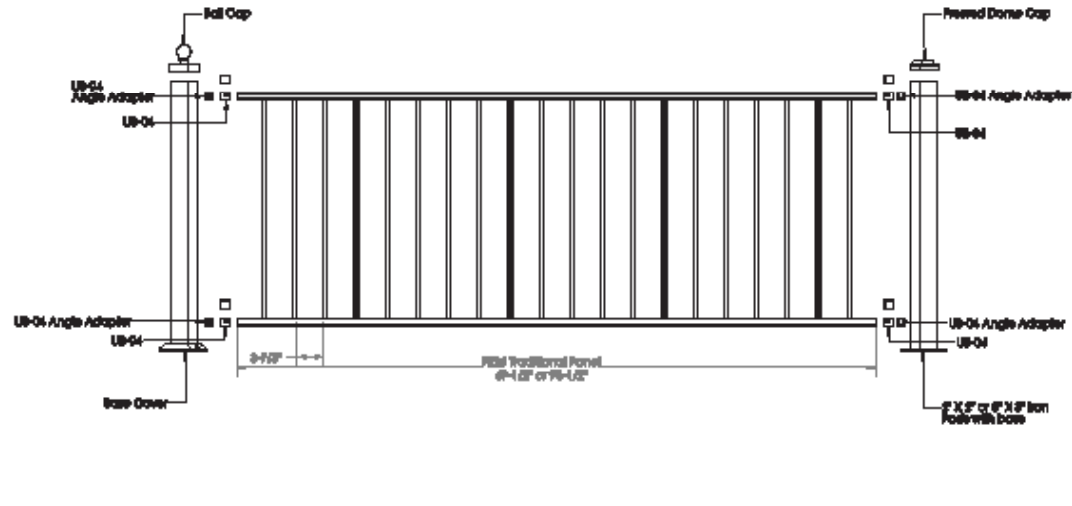
Fortress Posts must always be secured to the deck framing and should never be attached to only the deck boards.

MOUNT BRACKETS & PANELS

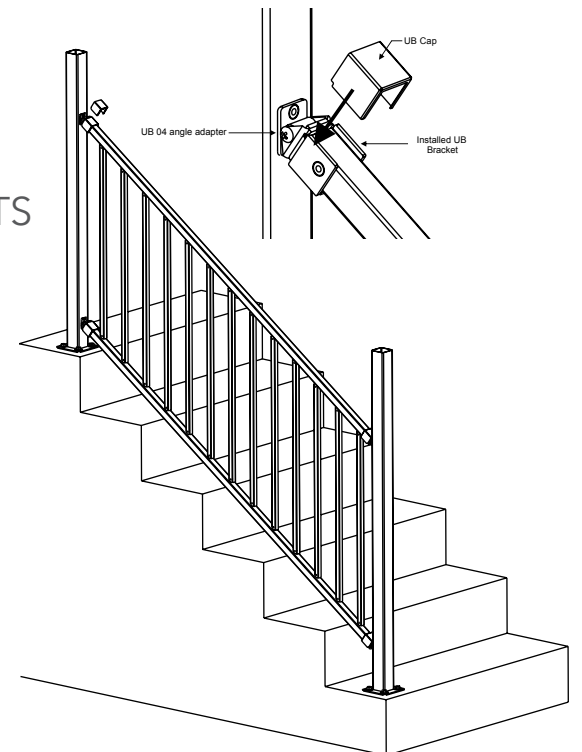
OPTION 1: UNIVERSAL BRACKETS



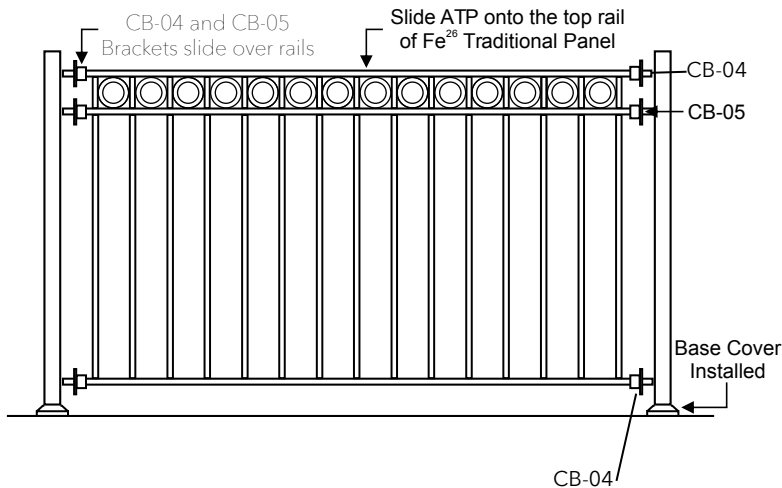
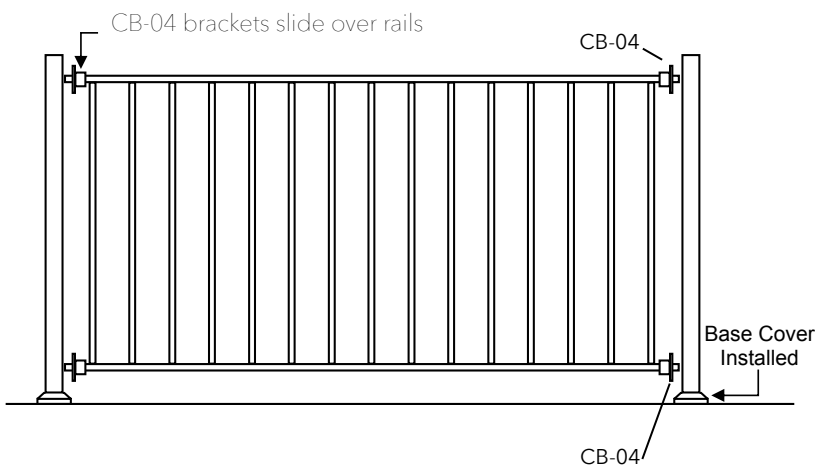
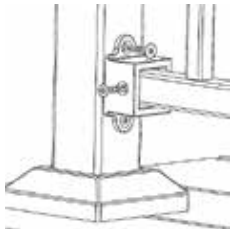
UNIVERSAL BRACKET: ANGLE/MITER



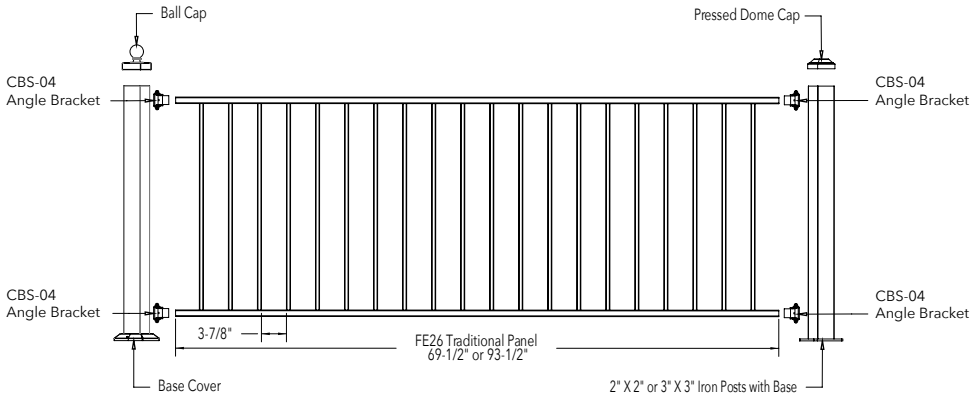
STAIR WITH UNIVERSAL BRACKETS



OPTION 2: COLLAR BRACKETS



COLLAR BRACKET: ANGLE/MITER (CBS-04)



STAIR WITH COLLAR BRACKETS

