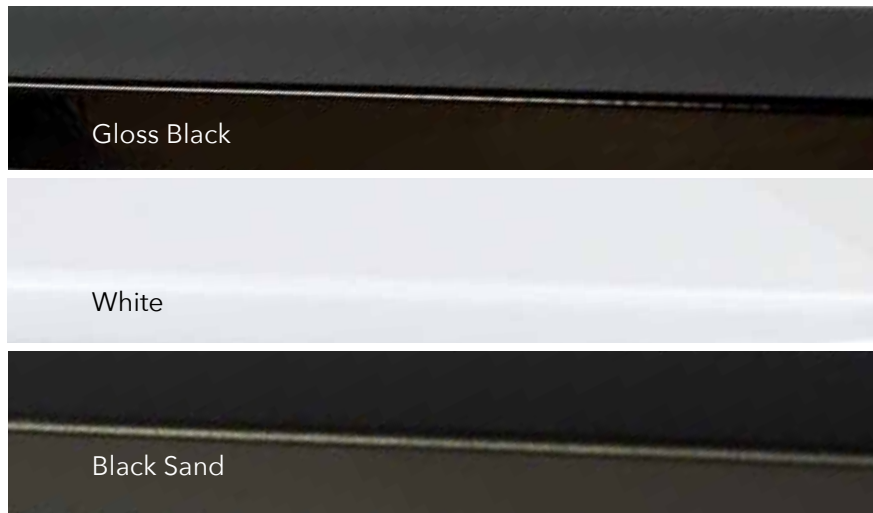


AL¹³ | ALUMINUM RAILING

SIMPLIFIED



www.FortressRailing.com

ALUMINUM MADE. FORTRESS DURABLE.

Fortress Al¹³ is an innovative, first of its kind, fully pre-welded aluminum railing system. Distinctly different from aluminum kits, Fortress Al¹³ is attractive and easy to install with its simple bracket system. It also has superior performance in strength and safety, which is a unique benefit to a pre-welded system. Quality welding and premium powder coating create a virtually maintenance free system designed for use in a variety of environments.

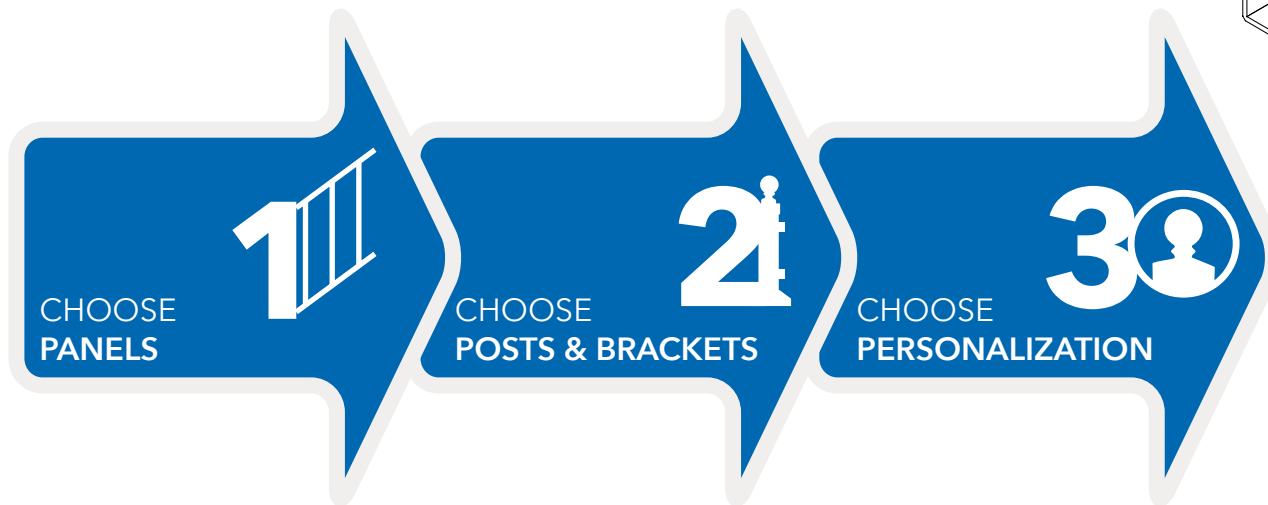




FEATURES & BENEFITS

- Pre-welded Panels with Patent Pending bracket system
- Distinctly different from the traditional Aluminum Kits
- Tested in accordance with AC273, NBCC, OBC, ABC & BCBC
- Quick and Easy Installation
- 100% recyclable
- Superior performance in strength and safety
- Use with Wood, Composite, Vinyl or Fortress Aluminum posts

SIMPLE ASSEMBLY EASY AS 1, 2, 3 **FORTRESS**



FORTRESS

PREMIUM FINISH

Fortress Al¹³ Aluminum Railing is available in three premium finishes engineered to withstand the elements.



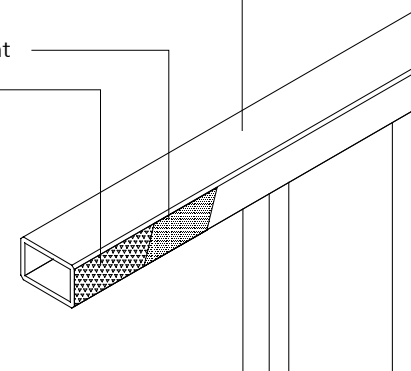
Protected with



Premium Grade Powder Coat

Quality Pre-Treatment

Alloy Extruded Tube



AI¹³ | ALUMINUM RAILING

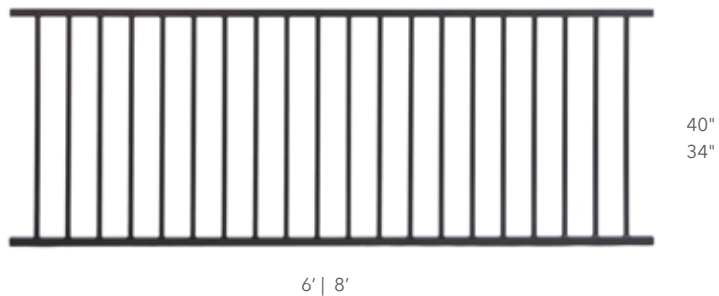
SELECTION SIMPLIFIED

| PANELS

All panels can be used with several types of posts such as Metal, Wood, Vinyl or Composite

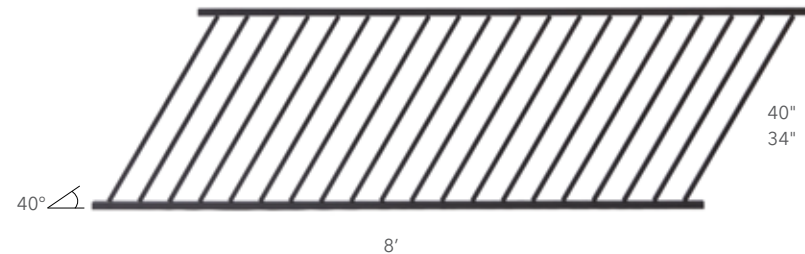
LEVEL

TRADITIONAL



STAIR

TRADITIONAL ADJUSTABLE



I-Support
(Panel support optional)

Reference the Fortress Railing Product Grid on page 67 for exact dimensions



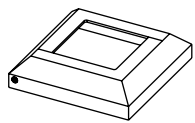
2 | POSTS & BRACKETS

POSTS

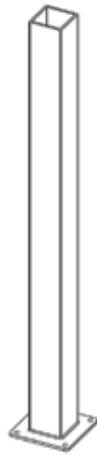
All post base plates are pre-drilled enabling ease of wiring for lighting installations.

45.5"
(Goes with 40" Rail panel or 34" Railing panel when using Accent Top Panels)

39.5"
(Goes with 34" Railing panel)



(Post Base Covers included in box)

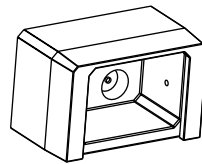


3"

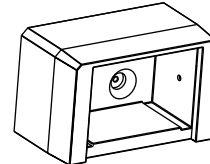
BRACKETS - PATENT PENDING

EVOLVE BRACKETS

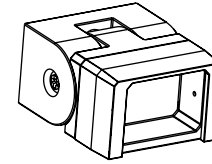
Hidden Fasteners



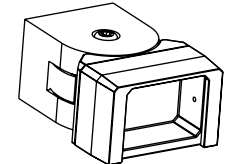
External (Level)
Patent Pending



External Large
(only use when installing an Accent Top Panel) - (Level)

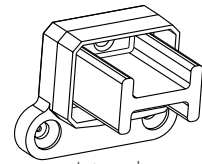


Stair

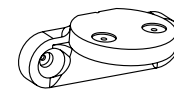


Angle
(used for Miter applications)

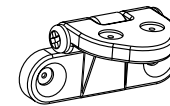
Low Profile Fasteners



Internal
(Use Stair/Angle brackets from above to coordinate)
(Level)



P2 Level
(Must use when installing Accent Top Rail, can also be used to install Accent Top Panel)
(Level and Angle/Miter)



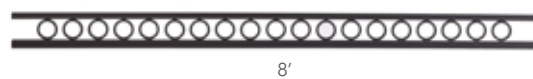
P2 Stair

Please refer to the Fortress Railing Product Grid on page 67 for specific applications

PANEL ACCESSORIES

ACCENT TOP PANEL

Circle Top



Ring Top



3 Rail



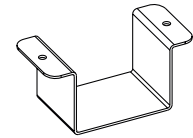
ACCENT TOP RAIL



Colonial Flat Accent Top Rail



CAP RAIL CLIP



POST ACCESSORIES

CAPS

(Without Lighting Capability)



Flat Pyramid Cap
3"

Ball Cap
3"

CAPS

(With Lighting Capability)



Flat Pyramid Cap

3"
Shown with Cap
Light Kit

3"
Shown with
Glow Ring

FortressAccents

POST BASE COVER

(Use with Wood, Vinyl or Composite Posts)



3.5" | 4" | 5" | 6"
This is available in ALL finishes of
Gloss Black, Antique Bronze, White,
& Black Sand



GATES

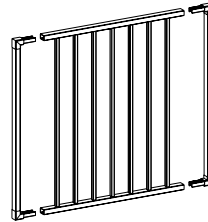
TRADITIONAL GATE



40"
34"

34.5"

GATE UPRIGHTS (Make a gate)



40"
34"



Maximum overall width 48"

(Hinges, Locks and Latches are available)

ACCENT LIGHTING

LED LIGHT MOUNTS

(For details on applications visit the
FortressAccents on Page 45)



HANDRAIL

ROUND

